

# Configuring OpenHand Clients for SoHosted

## Objective

This document instructs the user on configuring the various OpenHand Clients for the SoHosted service.

## Requirements

Windows Client: Any Microsoft Windows Operating System

Nokia Series 60 version 3+: any Nokia Series 60 V3 device

Pocket PC: Any Windows Mobile device

Webmail: Access to a web browser like Internet Explorer or Mozilla Firefox

## Table of Contents

Table of Contents.....	1
Setting up your GPRS connection for Nokia's .....	2
Overview.....	2
Requirements .....	2
Setting up a new Access Point (APN) .....	2
Setting up your GPRS connection for Windows Mobile Devices.....	4
Overview.....	4
Requirements .....	4
Setting up a new Access Point (APN) on a Windows Mobile Professional Device (Touch Screen)....	5
Setting up a new Access Point (APN) on a Windows Mobile SmartPhone Device (Non -Touch Screen)	7
.....	7
Network Operator APN Settings.....	8
Configuring the Nokia Series 60 Version 3+ Client.....	9
Configuring the Windows Mobile Client.....	11
Configuring the Windows Client .....	12
Webmail.....	13

## Setting up your GPRS connection for Nokia's

### Overview

Nokia mobile phones require the GPRS settings configuring correctly for OpenHand to communicate with the internet to your server. Each Network Operator has their own specific details; this document will show you how to add the setting for your particular phone provider.

### Requirements

Nokia S60 v3+ mobile Phone with one of the following Mobile Network operators

O2

Vodafone

Orange

T-Mobile

For a list of Nokia supported devices please see here:

<http://www.openhand-mobile.com/handset.php>

*Please Note that some Sims are not automatically granted GPRS access by the provider, if after following these instructions you find you cannot connect, try connecting via the Internal browser (typically Internet explorer)*

*If you find it does not connect re-check spellings then call your provider and confirm that you Sim is 'Provisioned for GPRS'*

### Setting up a new Access Point (APN)

The following screenshots are taken from a Nokia E61, other Nokia's may have slightly different options or ways to access the settings but APN information will always be the same.

Click on the Nokia Menu key this is found on the left of the Joypad



Select 'Tools' followed by 'Settings' and then 'Connection'

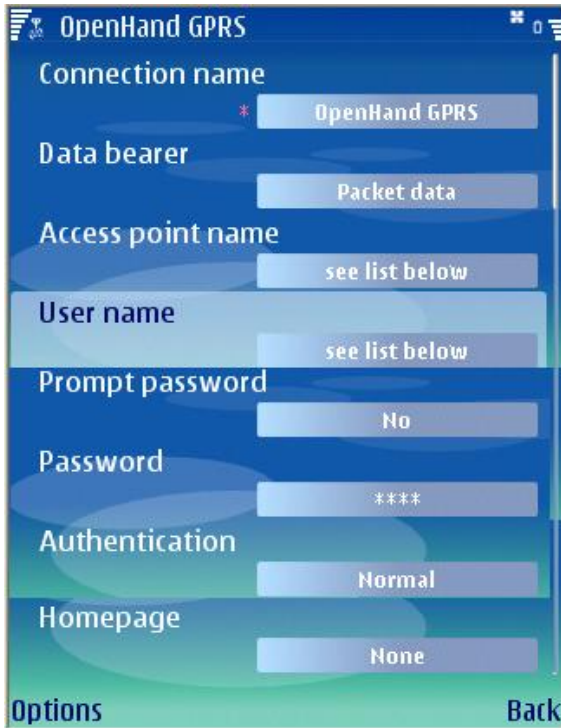
Select 'Access points'

Click on 'Options' – 'New access point' – 'Use default settings'

Edit each option by highlighting and pressing the centre Joypad button to allow you to make changes. Enter the relevant details for your particular Network Operator, leave the options 'Prompt password' set to 'No' and Homepage as 'None'.

**Note: Passwords are case sensitive**

*See the page 8 later in this document for Access Point Details*



Once you have entered the relevant setting the OpenHand Nokia client can be set to automatically use this setting as a default.

Access the OpenHand Settings from the Main OpenHand screen by clicking 'Options' followed by 'Settings'

- Select 'Connection' then 'Access Point' – 'Options' – 'Add New'. Highlight the new connection you have setup and click on 'OK'
- If this is not the only connection please insure it is the 1<sup>st</sup> in the list by selecting 'Options' – 'Move Up'
- Click 'Options' and 'Done' to save the changes.
- With the relevant Username/Password, Host and Port no. correct you will now be able to connect to the OpenHand Service.

## Setting up your GPRS connection for Windows Mobile Devices

### Overview

Windows Mobile phones require the GPRS settings configuring correctly for OpenHand to communicate with the internet to your server. Each Network Operator has their own specific details. This section will show you how to add the setting for your particular phone provider.

### Requirements

Windows Mobile 5 or 6 Professional or Smartphone (Touch screen or non-touch screen)

O2

Vodafone

Orange

T-Mobile **GPRS** enabled Sims

For a list of supported Windows Mobile devices please see here:

<http://www.openhand-mobile.com/handset.php>

***Please Note** that some Sims are not automatically granted GPRS access by the provider, if after following these instructions you find you cannot connect, try connecting via the Internal browser (typically Internet explorer)*

*If you find it does not connect re-check spellings then call your provider and confirm that you Sim is 'Provisioned for GPRS'*

## Setting up a new Access Point (APN) on a Windows Mobile Professional Device (Touch Screen)

The following screenshots are taken from a Palm Treo 750, other devices may have slightly different options or ways to access the settings but APN information will always be the same.

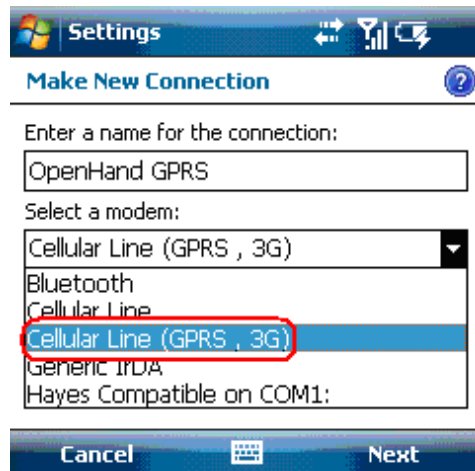
### Step 1

Click on the 'Start Button' – 'Settings' – 'Connections' (Tab along the bottom) – 'Connections' (Icon)  
Under 'My ISP' select 'Add a new modem connection'



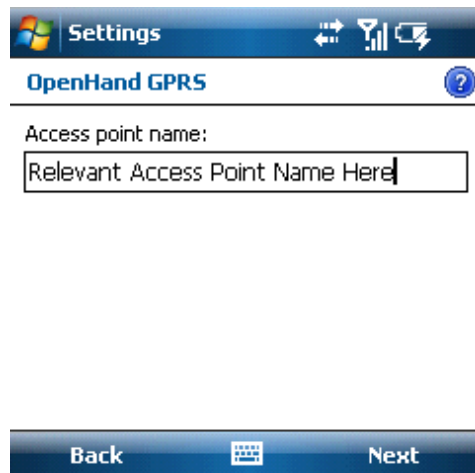
### Step 2

'Enter a name for the connection'  
From the pull down list and select 'Cellular Line (GPRS, 3G)' followed by 'Next'



### Step 3

Enter the relevant 'Access point name' for your particular Network Operator (**found on page 8**) for you supplier from the information list below followed by 'Next'



#### Step 4

Enter your Networks 'Username' and 'Password', leave the 'Domain' blank and select 'Finish' **Note: Passwords are case sensitive**



Settings

OpenHand GPRS

User name: Access Point Username

Password: \*\*\*\*\*

Domain:\* Leave Blank

\* If provided by ISP or network administrator.

Advanced...

#### Step 5

Confirm the new 'Access Point' is selected and tap on 'OK' to save the changes.



Settings

My ISP

Tap and hold on an existing connection for more options.

Name	Number
<input type="radio"/> Auto pick	
<input checked="" type="radio"/> OpenHand GPRS	Relevant Acce...
<input type="radio"/> Orange Internet	

Edit... New...

General Modem

## Setting up a new Access Point (APN) on a Windows Mobile SmartPhone Device (Non -Touch Screen)

The following screenshots are taken from a HTC S710, other devices may have slightly different options or ways to access the settings but APN information will always be the same.

Click on the 'Start Button' – 'Settings' – 'Connections' – 'GPRS'

The Smartphone only dials the 1<sup>st</sup> connection in the list (no.2), if it's not the correct GPRS settings OpenHand will not be able to connect to pickup your email. If you have any other connections they will need to be removed as there is no option to move connections up/down the list.

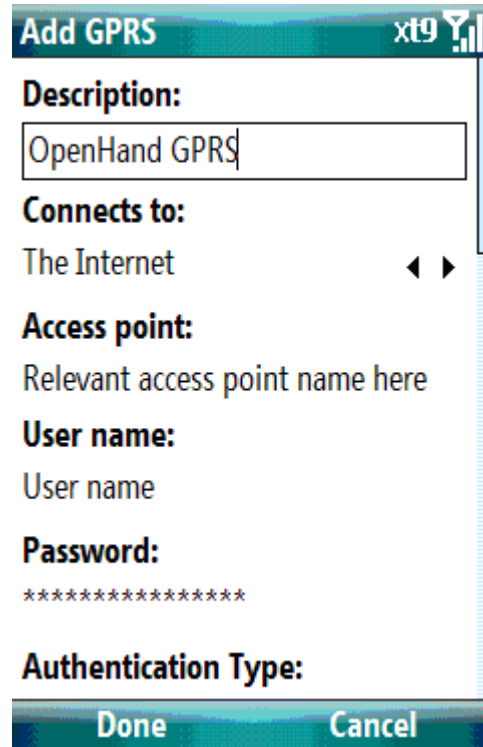
Select '1.New...'


Enter a 'Description' for the new profile and make sure that 'Connects to' is set to 'The Internet'

Enter the relevant 'Access Point' name for your provider (found on the next page) followed by 'User name' and 'Password'

**Note: Passwords are case sensitive**

No other details are required select 'Done' to save the settings.



**Add GPRS** xt9 

**Description:**  
OpenHand GPRS

**Connects to:**  
The Internet ◀ ▶

**Access point:**  
Relevant access point name here

**User name:**  
User name

**Password:**  
\*\*\*\*\*

**Authentication Type:**

Done Cancel

## **Network Operator APN Settings**

Below are the details required for you Network Operator:

### **O2 GPRS settings**

APN address: mobile.o2.co.uk

Username: mobileweb

Password: password

### **Vodafone GPRS settings**

Access Point (APN) address: internet

Username: web

Password: web

### **Orange GPRS settings**

APN address: orangeinternet

Username: user

Password: pass

### **T-Mobile GPRS settings**

GPRS APN address: general.t-mobile.uk

Username: user

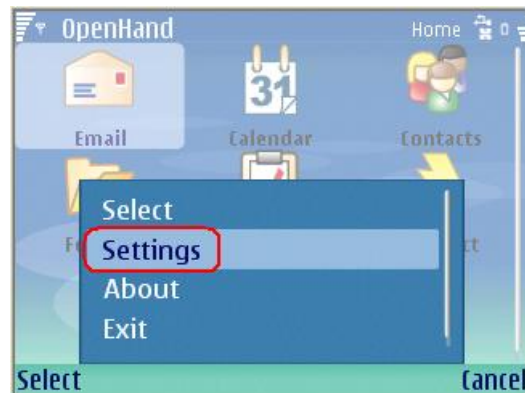
Password: wap

Once you have entered the details for your device confirm your connection details with OpenHand are correct (Host Name/IP, Username/Password) and you will then be able to connect your OpenHand client to your email

## Configuring the Nokia Series 60 Version 3+ Client

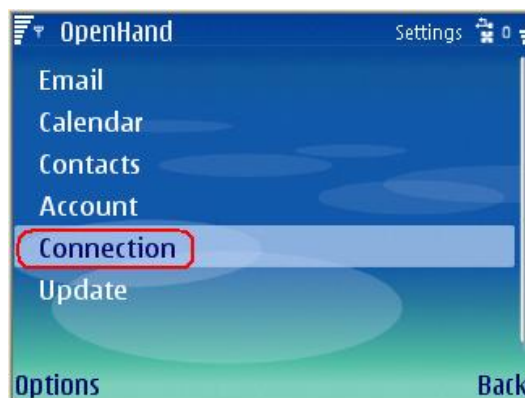
### Step 1

Once OpenHand has been installed and opened select the 'Options' button bottom left followed by 'Settings'



### Step 2

Select 'Connection'



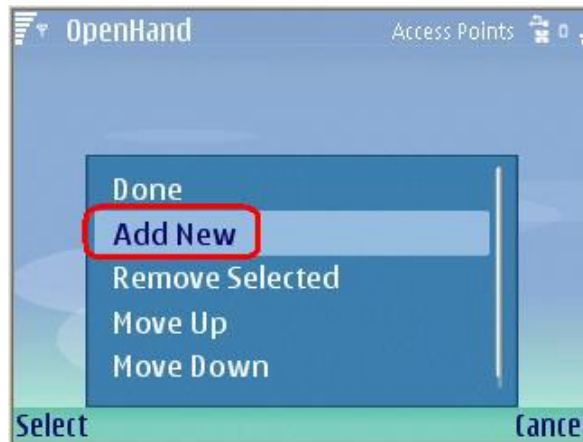
### Step 3

For SoHosted the 'Host' is set to '212.95.231.140' as default, along with the Port '10622' these are standard and do not require changing. Highlight 'Access points' and select it.



#### Step 4

Click on 'Options' followed by 'Add New'



#### Step 5

Select your Sim providers GPRS account, this must be the connection for GPRS, OpenHand does not work over WAP. (See the section earlier in this document 'Setting up your GPRS connection for Nokia's' for more information)



#### Step 6

Select 'OK' followed by 'Options' and then 'Done'. Select 'OK' to save the changes followed by 'OK' again. You can now connect your OpenHand client by selecting 'Connect' from the main screen.



## Configuring the Windows Mobile Client

### Step 1

From the OpenHand main screen tap on 'Menu' followed by 'Settings' followed by 'Connection' Note Screenshots taken from a Windows Mobile touch screen device, Instructions are the same for a non-touch screen device.)



### Step 2

Confirm the 'Host' is set to '212.95.231.140' and that the 'Port' number is set to '10622'. Enter your 'Username', Select 'OK' followed by 'OK' again to save and take you back to the main screen. Select 'Connect' to access your email.



## Configuring the Windows Client

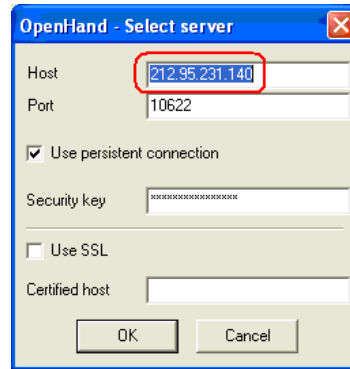
### Step 1

Once the web client has loaded, click *'Settings'* followed by *'Change Connections'*



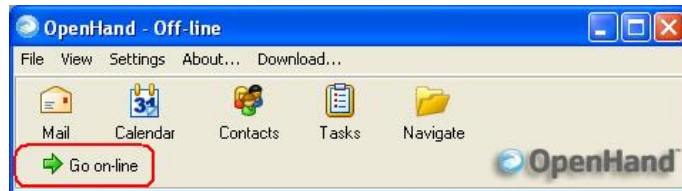
### Step 2

Ensure that the *'Host'* is set to *'212.95.231.140'* and port to 10622 and click *'OK'*, DO NOT change the *'Security key'* or the connection will fail.



### Step 3

Click on *'Go on-line'*



### Step 4

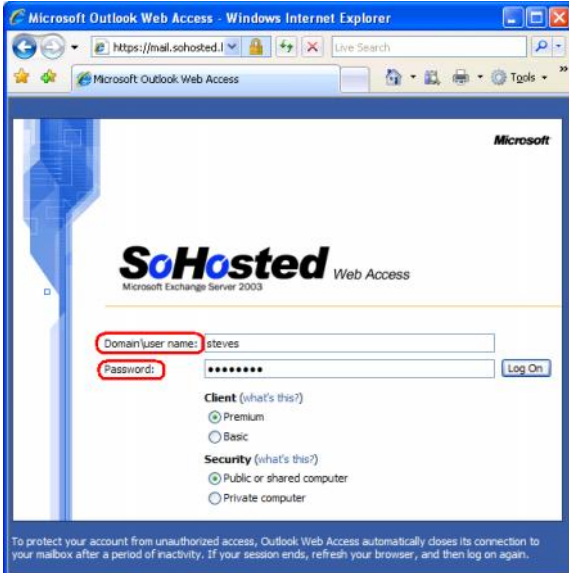
Enter your *'Username'* and *'Password'*, you may choose to save your password but it is not advisable if you are working on a shared computer. Click *'OK'*



## Webmail

Open your browser (in this case Internet Explorer) and browse to the following email address:  
<https://mail.sohosted.biz/exchange>

Enter your 'User name' and 'Password' as you do on your mobile device and click on 'Log On'



**--End of Document--**